

Oak & Poppy



Welcome to Oak & Poppy

We're so glad you've chosen to stay with us in one of our individually designed boutique apartments.

You're staying above our beautiful restaurant and bar serving delicious food and drinks in the heart of Hampstead

Guest information

Location

The Oak & Poppy is a few minutes walk from Hampstead Station (Northern line). 9 minutes walk from Hampstead Heath (Overground line)



Local attractions

Everyman Belsize Park Cinema

Just a 11 minutes walk to a warm and friendly atmosphere cinema. With an a wide array of mainstream, independent and classic films, special events, launches and a diverse calendar of live satellite broadcasts, there is something for everyone at Everyman.

203 Haverstock Hill, Belsize Park, London NW3 4QG



Hampstead Heath

Just a 15 minutes walk to the one of London's most popular green spaces, famous for its spectacular views of the capital's skyline, Hampstead Heath is an expanse of beautiful countryside just a short drive from the city center. The Heath's mosaic of habitats makes it a haven for all kinds of wildlife, acting as home to a number of priority species identified in the UK Biodiversity Action Plan.

14 E Heath Rd, London NW3 1AL

Shopping

Camden Market

One of the world's most famous markets. The Market is packed the gunnels with stalls trading in handmade clothes and jewelery, music memorabilia, objects from ages past and authentic food from far flung locations

32 Camden Lock Place, London NW1 8AF England

Waitrose

A brand of British supermarkets, founded in 1904 offering various options of groceries and goods.

199 Finchley Rd, South Hampstead, London NW3 6NN



Emergency contact details

Overnight Reception

Between the hours of 11.30 pm - 7am if you have any queries or any emergency issues please call overnight receptionist on:

+44 (0) 7701-341-774



Oak & Poppy apartments are fully equipped with fire prevention devices.

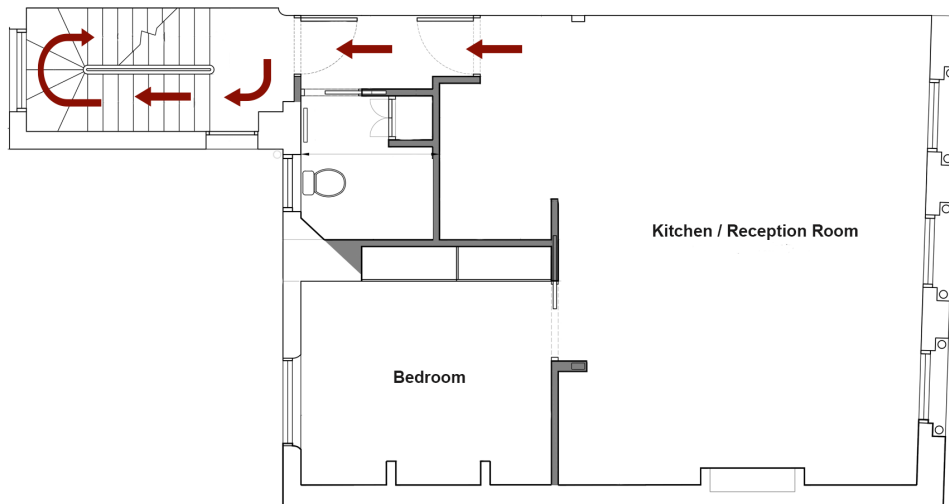
Fire extinguishers are located on all floors throughout the building.

There are fire extinguishers points located in the building, one on each floor.

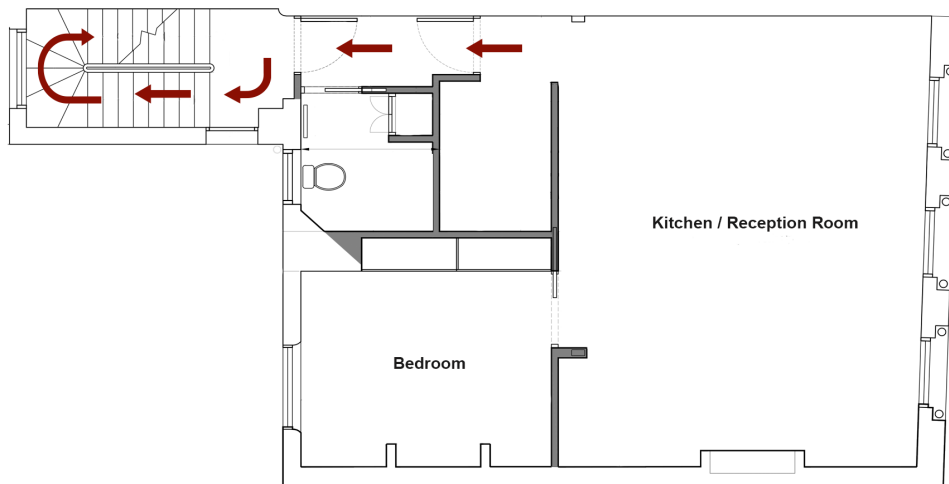
For your additional safety, please familiarize yourself with the fire alarm call points & exit routes.

Fire action notice

FIRST FLOOR

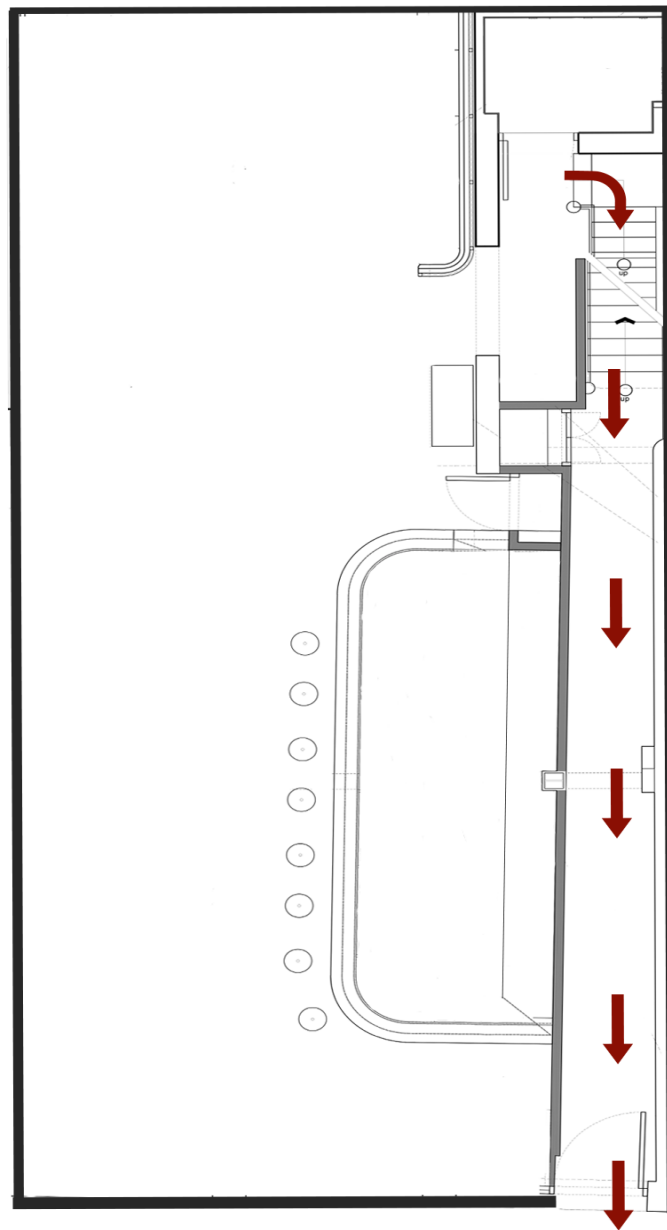


SECOND FLOOR



Fire action notice

GROUND FLOOR



To street

Important

If you discover, or accidentally start a fire:

Leave the room immediately, ensuring that the door closes fully behind you. Activate the nearest call point to sound the alarm (These are located on the landing)

If you hear the fire alarm:

Leave the room immediately

Report to a member of staff

Exit the building via the stairs to the Entrance door.

Go to assembly point by the telephone box, opposite Roni's of Rosslyn Hill.

If obvious signs of fire are observed, call
0207 627 0344 or 999

Do not re enter the building unless told to do
so by an official



Bar & Restaurant

Breakfast, lunch & dinner

are served on the ground floor in our restaurant
(see menu enclosed) or visit www.oakandpoppy.co.uk

Our opening times are: Monday - Friday: 08:00 - 23:00,
Saturday: 09:00 - 23:00, Sunday: 10.00 - 22:30

Local amenities & services

There is a washing machine and dryer
in every apartment bathroom

Daily Cleaning and Laundry


As we operate as serviced apartments, we will not clean or replenish your apartment during your stay. If you would like clean towels or bedsheets please inform us at the bar.

We'd like to minimize our environmental impact and ask our guests to try and re-use your towels during your stay.

We have opted for toiletries containing natural ingredients & organic extracts which have been packaged in biodegradable or recyclable material.

Dry Cleaning Service

We have a local trusted dry cleaning service available for either next day service or within two hours (at an additional cost).
If you would like this service, please enquire at the bar.



Apartment facilities

Kitchen

Our kitchenettes are stocked with a small selection of cutlery, cooking equipment, plates and glassware

Boiling and filter water is provided via our kitchen sink tap, please see instruction on the wall

Safe

There is a safe available in each room. Please follow the instructions in front of the safe door to operate. You can activate the safe by entering a code. Before you check out, please make sure the door of the safe is unlocked & left open

Heating + Cooling

The air conditioning can be for cooling and heating and is controlled from the panel on the wall next to the bedroom floor. We also have electric radiators which are set to maintain temperature of the apartments. If you would like extra heat please use the air conditioner



FLYING HORSE COFFEE

HOME COMPOSTABLE CAPSULES

Espresso Blend Morning Strength
Butterscotch Sweetness Paves The Way
For A Delicious Chocolatey &
Balanced Body

Espresso Single Origin Afternoon Strength
Notes Of Big Cherry Sweetness, Easing Into A
Floral & Rounded Finish

Caffeine Free Mellow Molasses
Expect Notes Of Dark Chocolate,
Molasses & Rye Bread



Apartment facilities

Internet TV & Movies

Our Tv's are all connected to the Internet to allow full use of Netflix, Internet TV and freeview channels

Wifi

There is free WiFi. To log in select "oak&poppy-apartments" & enter the password:
48rosslynNW31NH



Additional amenities

We also have the following additional amenities should you require them during your stay. Simply ask in the office or at the bar and we will bring these to your room:

Sewing kit - Nail file - Ear plugs - Shaving kit - Dental kit -
Shoe shine

Policies

We operate a strict non smoking
& no pet policy throughout our apartments





Additional

Taxi Services

Please let us know if you would like us to book a taxi service for you

Addison Lee - 0207 387 8888

ATM

You can find ATM cashpoint at:

28a Hampstead High St, London NW3 1QA





*Thank you for
staying at*

Oak & Poppy